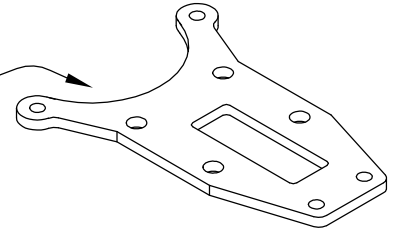


Addendum 11: Actuator Support Installation on a CAN-AM PLOW

Adapter Plate: Part Number 1066

ADAPTER PLATE
PART NUMBER 1066



1. Disconnect the plow from the ATV at the push tube assembly, per the manufacturer's instructions.
2. Tip plow to gain access to the underside of the plow angle adjustment assembly.
3. Remove the (4) 3/8-16x1.5" bolts on the actuator support angles.
4. Secure the assembled actuator support to the adaptor plate using (4) 3/8-16x1.5" bolts just removed and (4) 3/8-16 Nylock nuts.
Note: Bolts must be installed thru the underside of the adaptor plate and Nylock nuts on the top of the actuator support.
5. As shown on page 3, remove the hinge bolt (5/16-24x2.5") on the actuator support. Replace the 5/16" I.D. plastic spacer with the blade positioning lever assist handle and 3/8" I.D. x 3/4" O.D. x 0.75" long spacer.
6. As shown on page 1, remove (2) 5/16-18 nuts, leaving 5/16-18x1.25" bolts in place.
7. As shown on page 1, remove (2) 5/16-18x1.25" bolts and 5/16-18 nuts that secure lift angle.
8. As show on pages 2 and , install the actuator support / adaptor plate assembly over (2) 5/16"-18x1.25" bolts, and on top of (2) 3/8" I.D. x 3/4" O.D. x 0.25" long spacers.
Note: Blade positioning lever assist handle must slide underneath the blade positioning lever.
9. As shown on pages 4 and 5, secure the actuator support / adaptor plate usng (2) 5/16"-18x1.25" bolts / nuts at lift angle end and (2) 5/16-18 nuts at plow end.
10. Reconnect the plow to the ATV and install the actuator as discribed in step "C" of the instructions.

