

MIBAR® Power Lift Installation Instructions

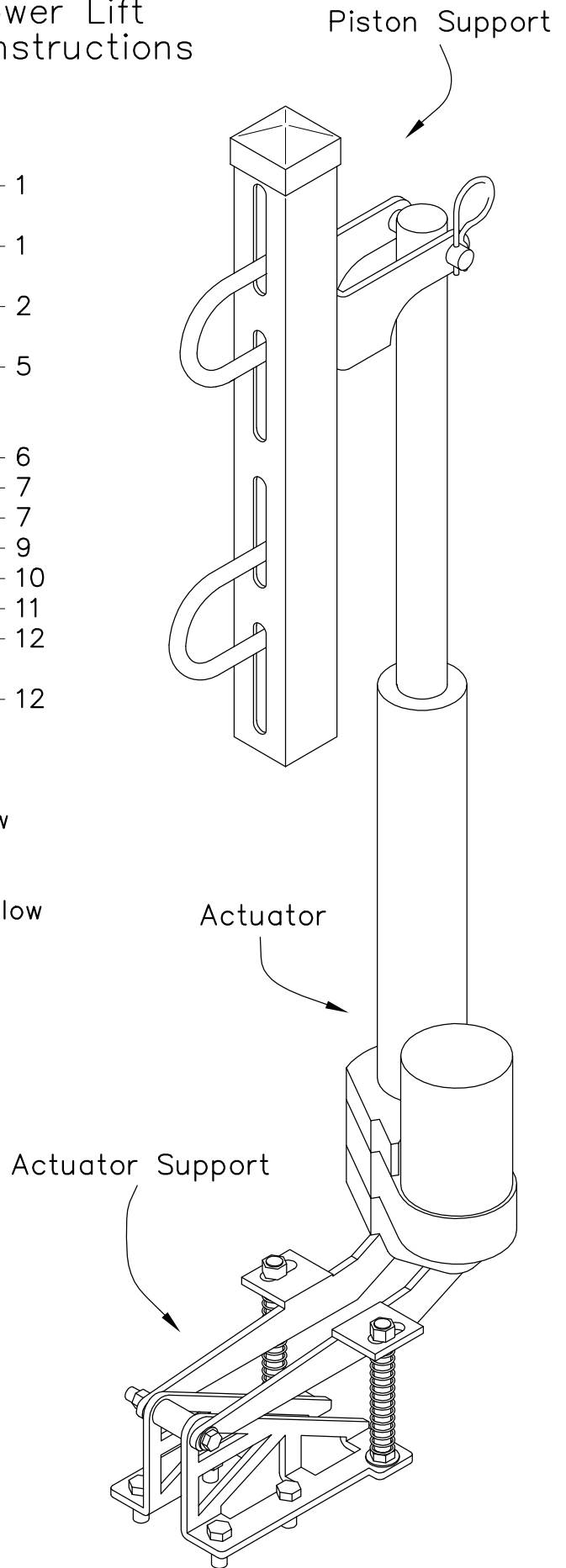
Table of Contents

I	Tools Required	1
II	Torque Specifications	1
III	Parts List	2
IV	WARNINGS	5
V	Installation	
	A. Assemble the Actuator Support	6
	B. Install Actuator Support	7
	C. Install Piston Support	7
	D. Install Actuator	9
	E. Wiring	10
	F. Installing the Switch	11
	G. Final Check	12
VI	Maintainance/Care	12
Addendum 1	Moose Plow	
Addendum 2	Warn Plow	
Addendum 3	Cycle Country Plow	
Addendum 4	Swisher Plow	
Addendum 5	Eagle Plow	
Addendum 6	Weekend Warrior Plow	
Addendum 7	Glacier-II Plow	
Addendum 8	Kimpex Plow	
Addendum 9	Quadrax Plow	
Addendum 10	Moose RM3 Plow	
Addendum 11	Can-Am Plow	
Addendum 12	Artic-Cat Plow	

- I Tools Required
- Ratchet
 - 1/2" Socket
 - 9/16" Deep Socket
 - 1/2" Open End Wrench
 - 9/16" Open End Wrench
 - Phillips Screw Driver
 - Pliers
 - Electrical Tape

II Torque Specifications:

- 5/16" Dia. Bolts — 12ft-lbs (17n-m)
 3/8" Dia. Bolts — 20ft-lbs (28n-m)



III Parts List

Description	Quantity	Part Number
actuator	1	1001
L.H. support angle	1	1002
R.H. support angle	1	1003
lower actuator support	1	1004
upper actuator support	1	1005
rocker switch w/mounts	1	1006
relays w/wiring	1	1007
strut 20"	1	1008
large spacer	1	1009
small spacer	1	1010
strut cap	1	1011
3/8-16 spring nuts	3	1012
compression springs	2	1013
3/8-16x1" strut bolts	3	1014
3/8-16x1.5" actuator support mounting bolts	4	1015
3/8" lock washers	3	1016
3/8" flat washers	3	1017
3/8-16x2" U-bolts	2	1018
3/8-16 flanged Nylock nuts	6	1019
3/8-16 Nylock nuts	4	1020
3/8-16x4" carriage bolts	2	1021
3/8-16 jam nuts	6	1022
7/16" washer	2	1023
5/16-24x2.5" hinge bolt	1	1024
5/16-24 flanged Nylock hinge nut	1	1025
1/4" washers	4	1026
5/16" I.D. hinge spacers	1	1027
2 1/4" x 1/2" pin, actuator end	1	1028
2.5" x 1/2" pin, piston end	1	1029
cotter pin, actuator end	1	1030
removable cotter pin, piston end	1	1031
3/8-16x3" J-bolt	1	1032
strut mount shim kit	1	1000A
compression spring kit	1	1000B
hardware kit 1	1	1000C
hardware kit 2	1	1000D

III Parts List for Specific Plows

Description	Quantity	Part Number
WARN ®		54793
adapter plate	1	1033
3/8-16x1.5" bolt	1	1015
3/8" flat washer	2	1017
5/16-24x1.75" bolts	2	1034
5/16" washers	2	1026
5/16-24 flanged Nylock nut	2	1025
3/8-16 flanged Nylock nuts	1	1019
SWISHER ®		54910
adapter plate	1	1035
1/2-13x4" bolt	1	1036
1/2" flat washer	1	1037
spacer 1/2" I.D. x 1/4" thick	1	1038
spacers 3/8" I.D. x 3/16" thick	2	1039
3/8" flat washers	4	1017
CYCLE COUNTRY ®		55146
adapter plate	1	1040
blade positioning lever	1	1041
5/8" Flat washer	1	1042
wedge spacers	2	1043
3/8-16x2" carriage bolt	1	1044
3/8-16 flanged Nylock nuts	1	1019
spacer 5/16" I.D. x 3/16" thick	2	1045
AMERICAN EAGLE ®		54936
adapter plate	1	1046
5/16-24x1" bolts	2	1047
5/16" washers	2	1026
5/16-24 flanged Nylock nuts	2	1025
3/8-16x1.75" flanged bolts	2	1048
3/8-16 flanged Nylock nuts	2	1019
WEEKEND WARRIOR ®		56241
adapter plate	1	1049
GLACIER-II ®		56102
adapter plate	1	1050
5/16" I.D. x 0.5" tall spacers	2	1051
5/16-24x2" bolts	2	1052
5/16-24 Nylock nuts	2	1053

III Parts List for Specific Plows

Description	Quantity	Part Number
KIMPEX ®		56186
adapter plate	1	1054
blade positioning lever	1	1055
5/16–24x1.75” bolts	2	1034
5/16–18x2” fully threaded bolt	1	1056
5/16–24 Nylock nut	2	1053
5/16–18 Nylock nut	2	1071
5/16–18 nut	1	1058
5/16” I.D. x 0.5” tall spacers	2	1051
5/16” I.D. x 0.25” tall spacers	2	1057
QUADRAX ®		61773
adapter plate	1	1040
blade positioning lever	1	1059
auto-lock bracket	1	1060
auto-lock handle	1	1061
5/16–18x1.25” bolt	1	1062
5/16–18x1.5” bolt	1	1063
5/16–18 Nylock nuts	2	1071
5/16” I.D. x 0.75” tall spacer	1	1051
wedge spacers	2	1057
MOOSE RM3 ®		58126
adapter blocks	2	1064
5/16–18x2” flanged bolts	1	1065
5/16–18 Nylock nut	1	1071
CAN-AM ®		59381
adapter plate	1	1066
blade positioning lever	1	1067
5/16” I.D. x 0.25” tall spacer	2	1057
1/4” washers	2	1026
5/16” I.D. x 0.56” tall spacer	1	1062
5/16–18x1.75” bolt	2	1034
5/16–18 Nylock nuts	2	1071
ARTIC-CAT ®		57790
adapter plate	1	1068
blade positioning lever	1	1069
5/16” I.D. x 0.375” tall spacer	2	1070
5/16–18x2” fully threaded bolt	1	1056
5/16–18 nuts	2	1071
1/4–20 low profile Nylock nuts	2	1072
1/4–20x0.75” bolts	2	1073

IV Warnings



WARNINGS

- *Adhere to all ATV and plow manufacturer warning and caution labels.*
- *Always check that power is disconnected from actuator before installing, adjusting, or servicing any portion of plow assembly*
- *Torque all bolts as specified in section II. Failure to do so could result in damage to the equipment, injury or death to the operator*
- *Maintain equipment as specified in section VI. Failure to do so could result in damage to the equipment, injury or death to the operator*
- *This product is designed for the purpose of snow removal from paved surfaces. Do not use this product for any other application, such as "off roading", or moving of any other material. Doing so could cause damage to the ATV, plow, and plow lift. Death or injury to the rider could also occur.*
- *All warranties be held void if damage is determined, by Mibar Products, to have been caused by improper use.*

V Installation

A. Assemble the Actuator Support

1. As shown in Figure 1, position L.H. support angle, R.H. support angle, and lower support bracket.
 2. As shown in Figure 2, insert 5/16–24x2.5” bolt thru support angles and lower support bracket adding spacer and small washers.
 3. Secure using 5/16–24 flanged Nylock nut.
 4. As shown in Figure 3, insert 3/8–16x4” carriage bolts thru bottom of support angles and 7/16” washers.
 5. Secure carriage bolts using 3/8–16 jam nuts.
 6. Slide springs over carriage bolts and rotate lower support bracket over carriage bolts.
 7. Secure using 3/8–16 flanged Nylock nut.
- Note: As shown in Figure 3, tighten so that the top of the nut and the top of the bolt are flush.*
8. Insert (4) 3/8–16x1.5” bolts thru holes in support angles.
 9. Secure bolts using (4) 3/8–16 jam nuts.
- Note: Failure to install 3/8–16 jam nuts will result in plow not turning correctly.*

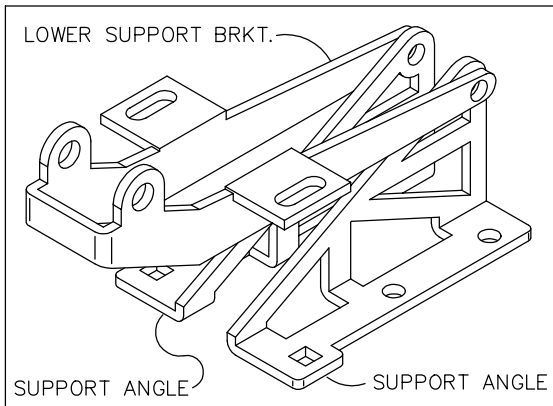


FIGURE 1

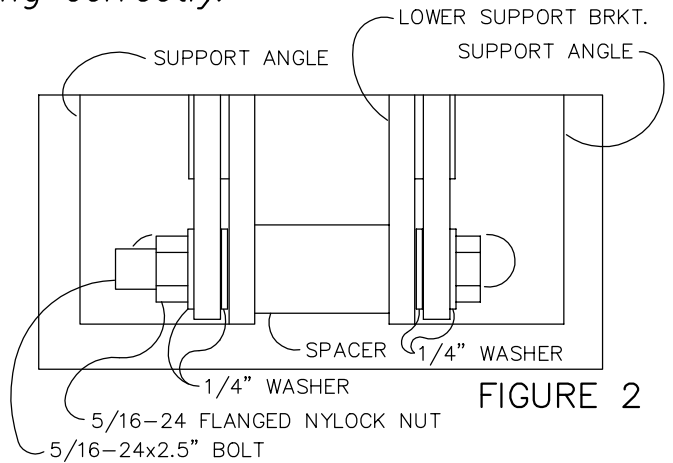


FIGURE 2

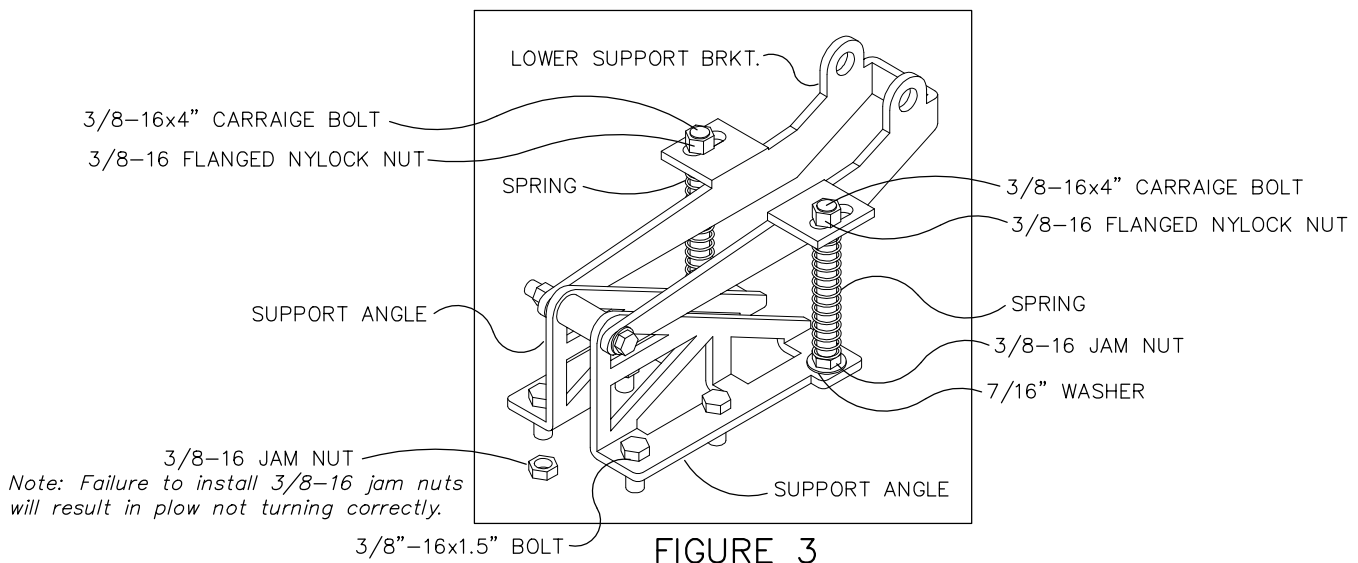


FIGURE 3

B. Install Actuator Support

1. Installation procedure and required parts will vary depending on the make and model of the plow. Locate the correct model in the addendum and install as instructed.

C. Install Piston Support

1. Attach 20" strut to ATV front guard rails using thick spacer, thin spacer, "U" bolts, and 3/8-16 flanged Nylock hex. hd. nuts as needed.

Note: Strut/spacer configuration will vary with different front guards. See Figures 4A thru 4E for examples.

Note: Strut must be mounted within 15 degrees of vertical as shown in Figure 4E.

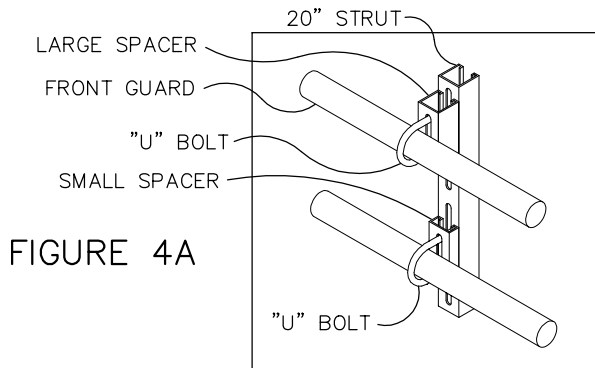


FIGURE 4A

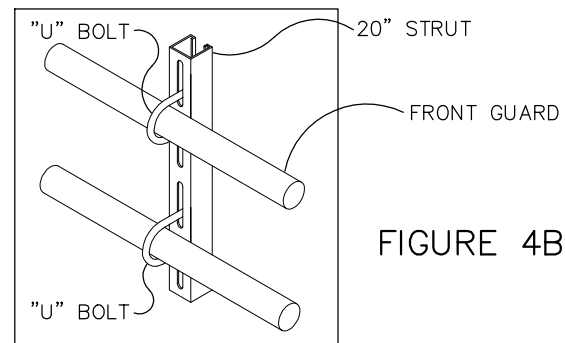


FIGURE 4B

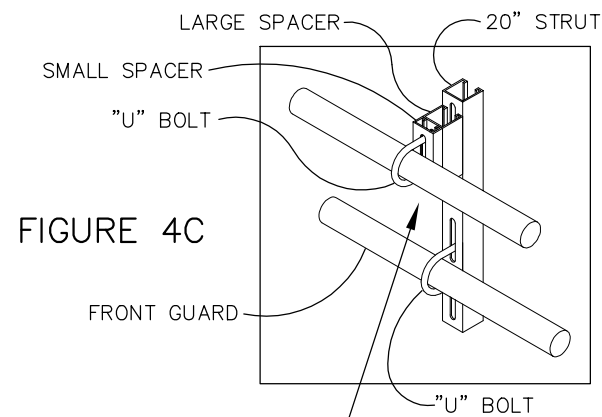


FIGURE 4C

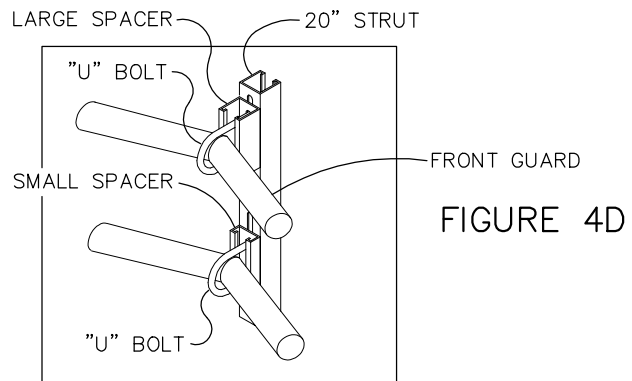


FIGURE 4D

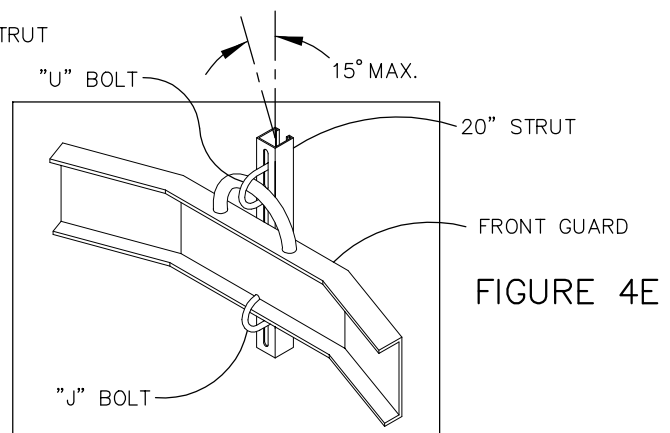
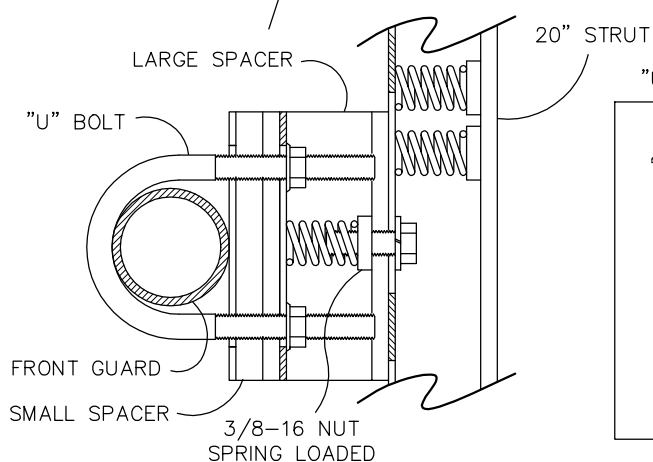


FIGURE 4E

2. As shown in Figure 5, Insert 3/8-16 spring loaded nuts into strut.
3. Loosely secure piston support to strut using 3/8-16x1" bolts and lock washers as shown in Figure 6.
4. Press strut cap on to top of strut.

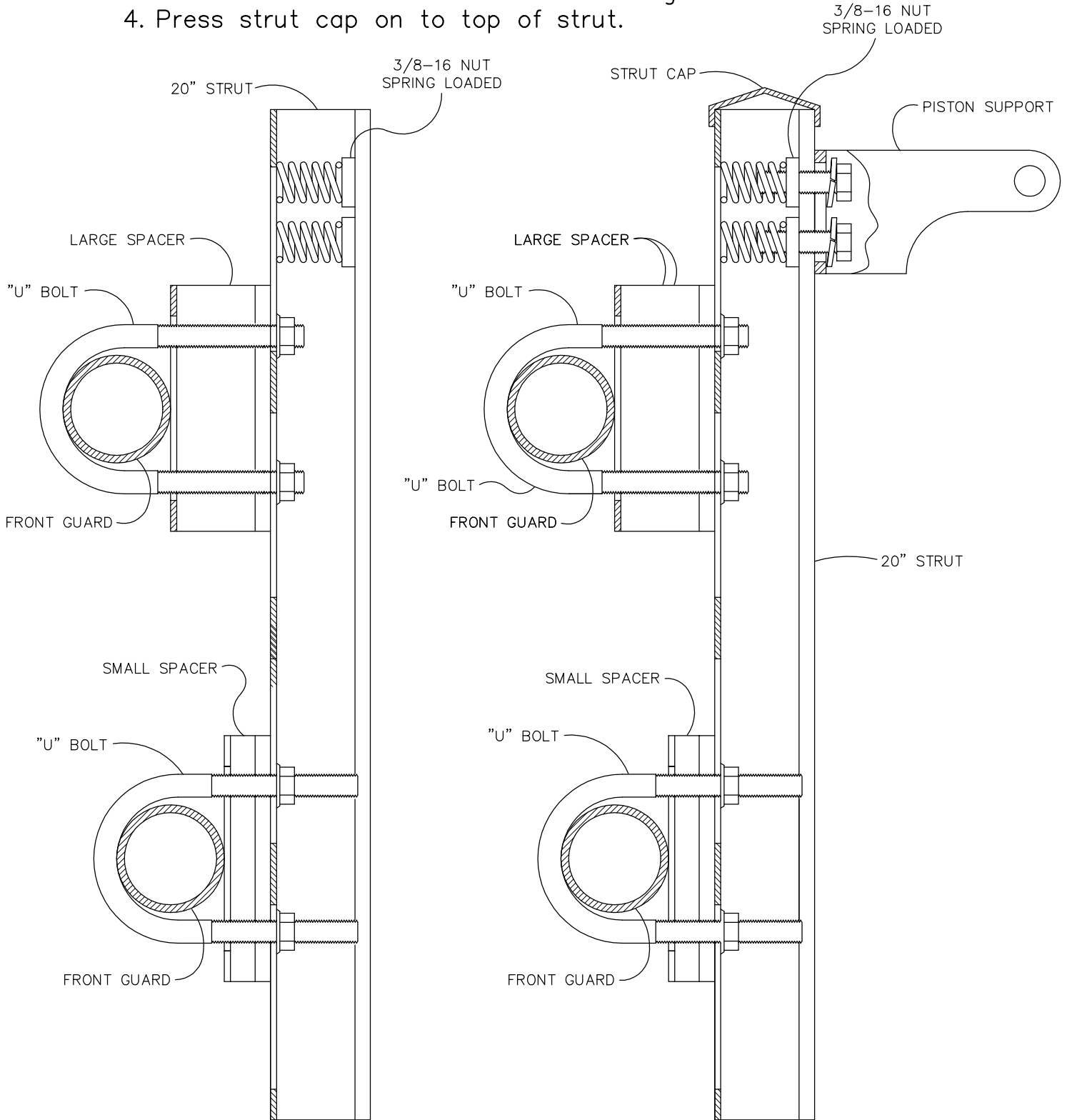
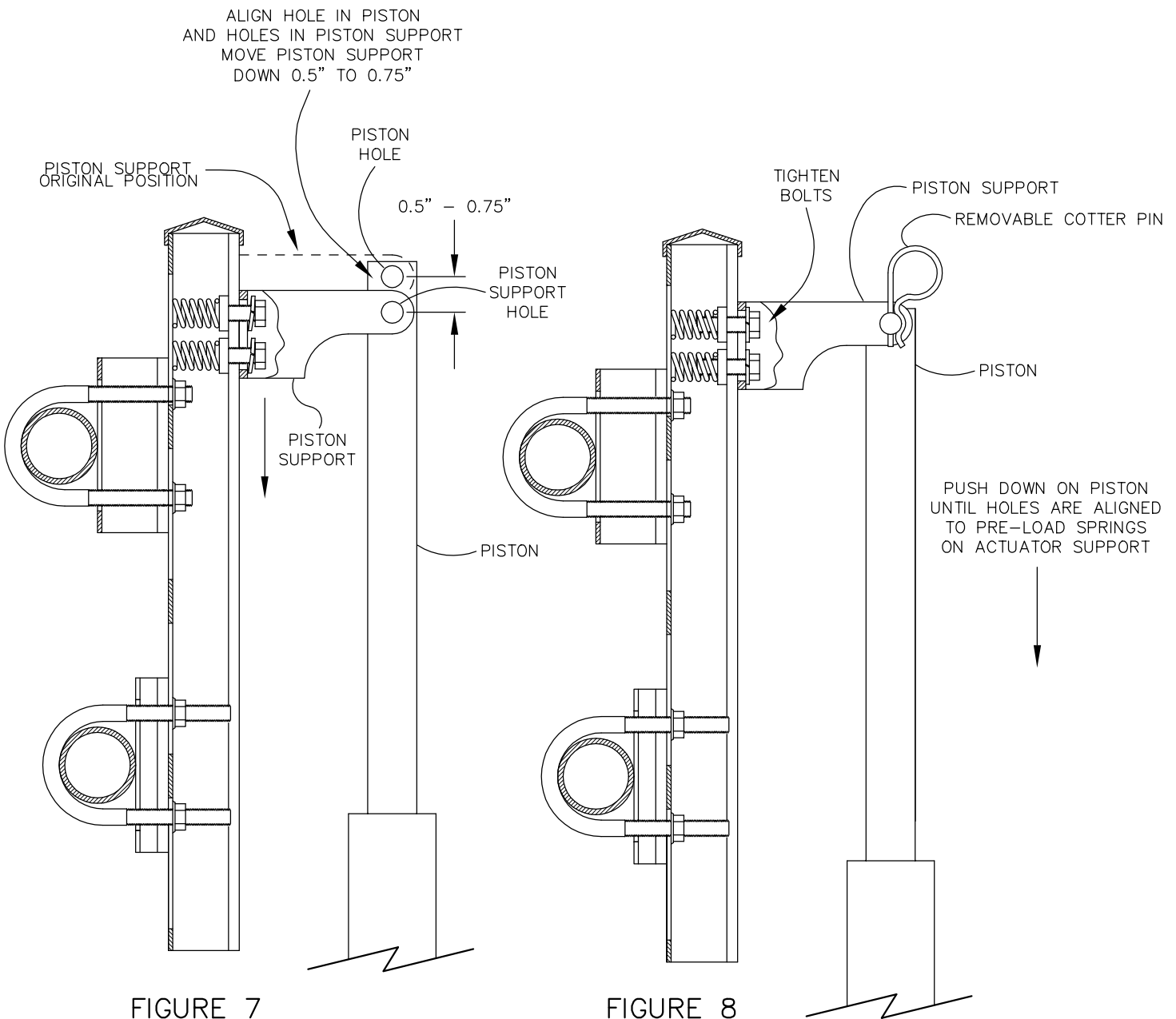


FIGURE 5

FIGURE 6

D. Install Actuator

1. Secure actuator mounting post to actuator support using 2.25" x 0.5" pin and cotter pin. Bend end of cotter pin.
2. Align piston mounting hole and holes in piston support
3. As shown in Figure 7 and Figure 8, slide piston support down 0.5" to 0.75" and tighten bolts.
4. As shown in Figure 8, push down on piston until mounting hole is aligned with piston support hole and secure using 2" x 0.5" pin and removable cotter pin.



E. Wiring

1. Secure the relays in a dry location.
Note: The battery compartment or under the seat are the preferred locations. Mount to the frame only if the preferred locations are not feasible.
2. As shown in Figure 9, route the RED and GRAY wires along the frame and connect to the battery. The RED wire goes to the positive (+) terminal and the Gray wire goes to the negative (-) terminal.
Note: Do NOT route any wires near exhaust components.
3. As shown in Figure 9, route the BLACK and BLUE wires (with weather connector) along the frame to the front of the machine.

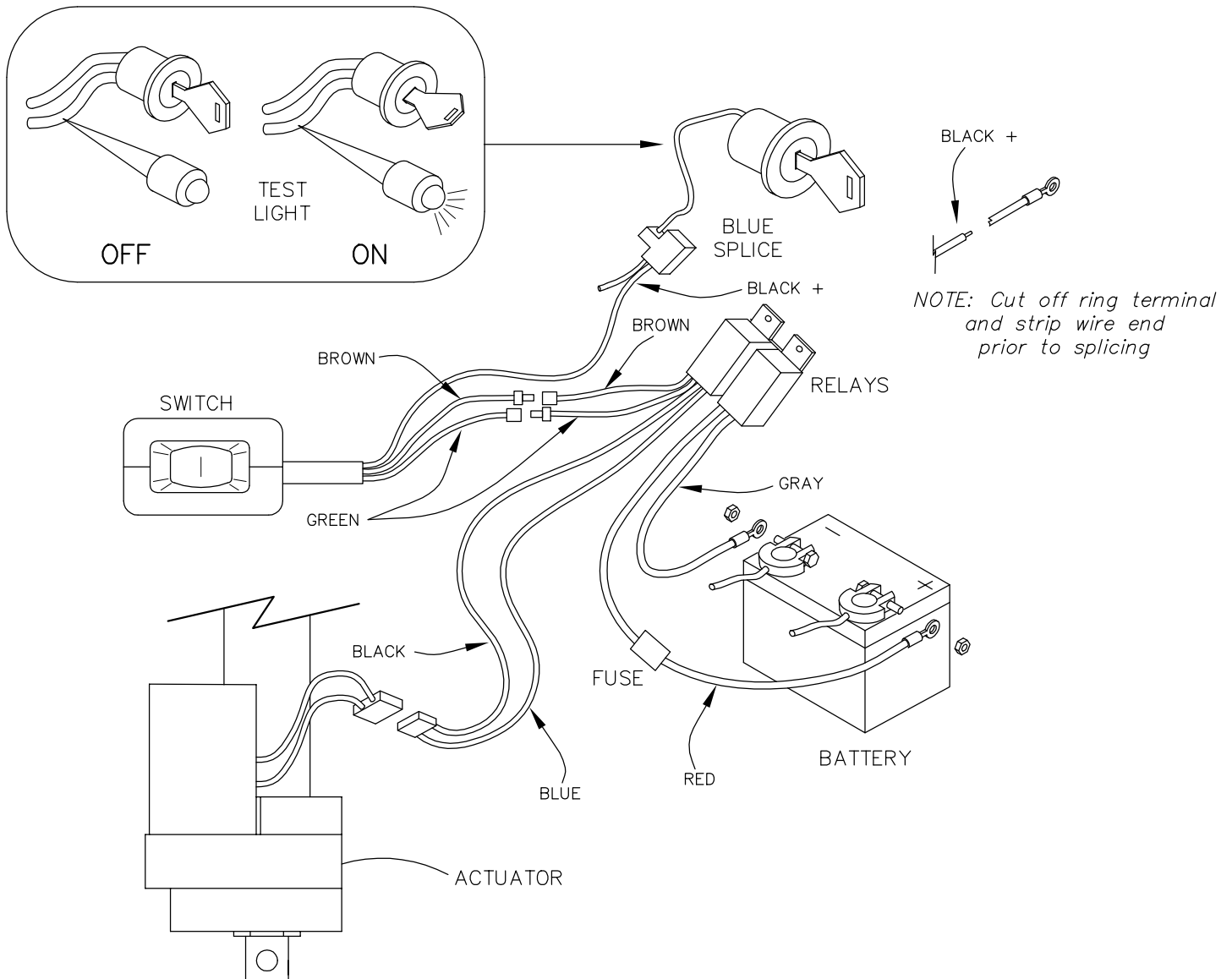


FIGURE 9

F. Installing the Switch

1. Locate the place on the handle bars where the switch clamp will be mounted. Recommended location is on the left side, just inboard of the light switch.
Note: All ATV's are different, mounting locations will vary.
2. Wrap two layers of electrical tape around the handle bars at this location to improve clamping. Attach clamp and assemble switch per manufacturer's instructions and as shown in Figure 10.
3. Adjust the location of the switch by rotating the strap. An example if a suitable location is shown in Figure 11. Tighten all bolts and nuts securely to hold switch in position.
4. Route the GREEN and BROWN wires of the switch wiring harness to the GREEN and BROWN wires on the relay wiring harness. Wire tie the wiring to handle bars and frame as needed to keep from moving during vehicle operation.
5. Route the BLACK wire to the ignition wire.
Note: The ignition wire will only have power when the key is in the "ON" position. Verify the correct wire using a test light and turning the to the "ON" and "OFF" position.
6. As shown in Figures 9 and 11, use the blue wire splice to connect the BLACK wire to the HOT ignition wire.
Note: Remove the insulation from the wires before placing them in the splice.

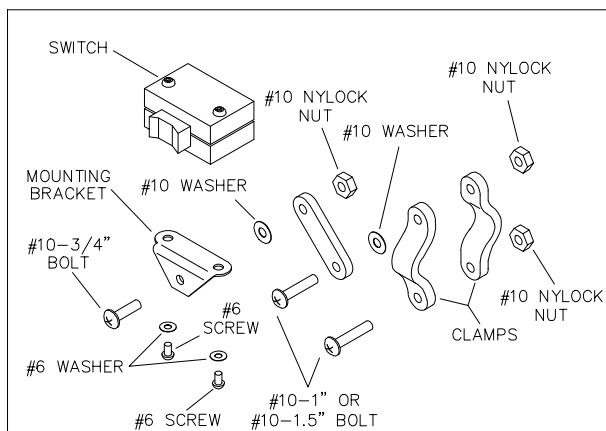


FIGURE 10



FIGURE 11

